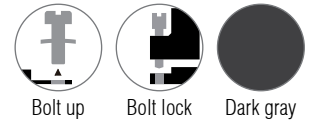


Digital in / output 16 point

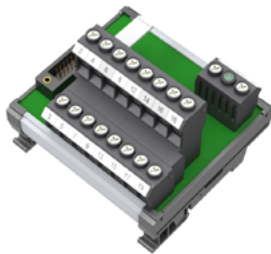
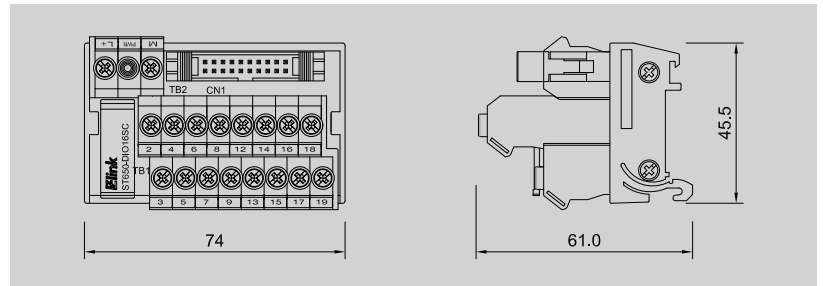
For 16 digital signals

6ES7321-1BH02-0AA0 / 6ES7321-1BH10-0AA0
 6ES7321-7RD00-0AB0 / 6ES7321-1BH50-0AA0
 6ES7322-1BH01-0AA0 / 6ES7322-1BH10-0AA0
 6ES7322-5RD00-0AB0 / 6ES7322-5SD00-0AB0
 6ES7323-1BH01-0AA0

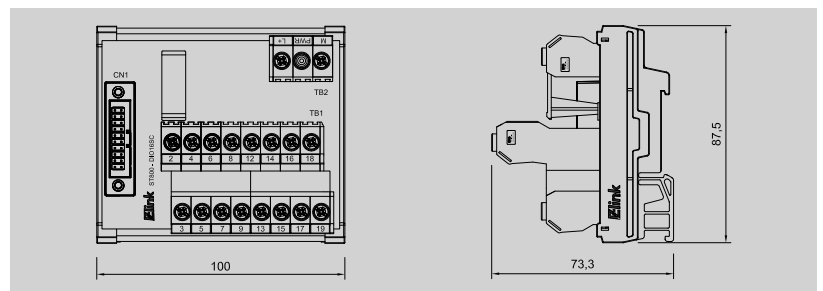
ST650 / ST800 20P series



ST650-DIO16SC 6.50 Pitch



ST800-DIO16SC 8.00 Pitch



Technical data

Connection data	
Connection to PLC	HE 10 connectors 20-pin
Connection type (field)	Screw bolt up
Connection size (field)	0.34 ~ 2.5mm ² (AWG22 ~ 14)

Input-output data	
Operating voltage	24VDC ± 10%
Max. current for channel	1.5A
Number of signals	16
PLC card supply voltage / LED voltage status	24VDC ± 10% / LED green
LED fuse indication per channel	-
PLC card supply current	2A
Fuse per channel	-

General data	
Ambient temperature	-25°C ~ 50°C
Storage temperature	-40°C ~ 60°C
Rated voltage	≤ 50V AC
Insulation test voltage	0.5KV DC
Weight 6.50 / 8.00	Approx. 114.0g / 174.92g

Dimensions	
Length x width x height (mm)	6.50 Pitch 74 x 45.5 x 61 8.00 Pitch 100 x 87.5 x 73.3

Mounting rail	TS35 (Weidmuller)
----------------------	-------------------

Ordering data	
Order No.	
62217001 (6.50 Pitch)	822220002 (8.00 Pitch)

Accessories / Spare part	
Terminal markers	6.50 8.00 DEK 5/8
Cross-connector	6.50 COM-6509 8.00 COM-8009

Use with	
Front connector	Cable
S7-300S-DA20P	DHH20-10K25L Page : 105 DAHHC20-10K24B Page : 104

